

Wilson Creek "Complex"

Issued by the Nevada BLM Ely Field Office in December 2006, The Wilson Creek Complex Wild Horse Gather Plan and Preliminary Environmental Assessment (EA) listed the Wilson Creek and Deer Lodge Canyon HMAs in Nevada as comprising the "Complex". However, two additional HMAs not included in the Ely Districts removal proposal, Mount Elinor and Choke Cherry HMAs managed by BLM in Utah, were also included in the February round ups.

The Nevada EA stated the Wilson Creek and Deer Lodge Canyon HMAs comprised 796,932 acres with a maximum wild horse population or "appropriate management level" (AML) not to exceed 210 animals within the Complex. (1) The Utah HMAs have a total acreage of 85,683 acres and an AML not to exceed 55 wild horses. (2) Overall, the Complex totals 882,615 acres with a maximum AML of 265 wild horses.

Nine livestock allotments were cited in the EA as being present within Nevada HMAs. (3) No data was found for the Utah areas. According to the Ely District 2005 Grazing Use Authorizations, these nine allotments authorize 76,229 Animal Unit Months (AUMs) of forage allocations for cattle and sheep, 57,991 AUMs and 18,238 AUMs respectively, though it is unclear what percentage of these allotments overlap the wild horse HMAs. (4) Wild horses have been issued a maximum total forage allocation of 2,520 AUMs between the Wilson Creek and Deer Lodge Canyon HMAs, while the Utah HMA's have been allocated a total of 660 AUMs for wild horse use.

All HMAs within this Complex are also part of the 1999 Lincoln County Elk Management Plan. Within this plan, 14 HMAs are identified as affecting the Elk Management Areas with a maximum of AML of 644 wild horses (5) for all HMAs and an elk population target of 1,850. (6)

In February 2007, the BLM removed a total of 802 horses, 14 horses either died or were destroyed, with an estimated 210 horses remaining; 160 in Nevada and 50 in Utah. (7) The estimated cost of these removals is approximately \$1.74 million dollars. (8)

(1) Wilson Creek Complex Wild Horse Gather Plan and Preliminary Environmental Assessment, (E.A.) NV-040-06-047, Department of the Interior, BLM Ely Field Office, December 2006. Pg. 2, I. Background, Table 1-Acres.

(2) www.blm.gov BLM Wild Horse & Burro Program, Fiscal Year 2006 Herd Statistics.

(3) Wilson Creek Complex Wild Horse Gather Plan and Preliminary Environmental Assessment, (E.A.) NV-040-06-047, Department of the Interior, BLM Ely Field Office, December 2006. Pg. 25, Appendix I, Appropriate Management Level.

(4) 2005, Appendix R- Ely District Grazing Allotments, D. Thompson.

(5) 1999 Lincoln County Elk Management Plan, Pg. 4, Table 2-Herd Management Areas (HMAs) and Established AML.

(6) 1999 Lincoln County Elk Management Plan, Population Goals and Objectives, Potential for Elk Distribution, Population Management Levels, and Elk Free Zones, Pg. 14, Action 3

(7) Ely Field Office Gather Summary, Wilson Creek Complex, February 2007. Courtesy of Benjamin Noyes, WH&B Specialist, Ely Field Office.

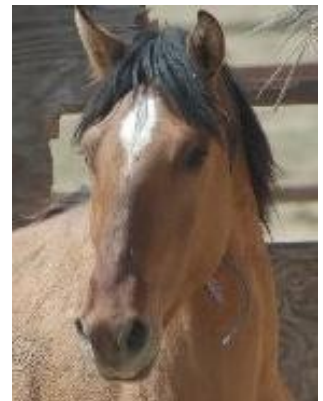
(8) Based on figures provided in An Economic Analysis of Alternative Fertility Control and Associated Management Techniques for Three BLM Wild Horse Herds by John M. Bartholow. Cost estimates were taken from budget planning spreadsheet supplied by Linda Coates-Markle, BLM/MT (4/29/2003) as interpreted by Don Glenn, BLM/DC (6/17/2003) and Lili Thomas, BLM/NV (9/22/2003). Includes cost of removal, transportation, medical, & assumes 1 year containment with all animals successfully adopted.



Wilson Creek Wild Horse

Captured: 02/20/07
4 Year Old Mare

HMA Acres: 686,490 Acres
AML: 160
Acres Per Horse: 4,290
Removed: 646
Remaining: 130



Deer Lodge Canyon Wild Horse

Captured: 02/20/07
3 Year Old Gelding

HMA Acres: 108,460 Acres
AML: 50
Acres Per Horse: 2,169
Removed: 106
Remaining: 30

Photos taken from BLM
Internet Adoption Websites.
HMA & AML Statistics from
BLM FY06 Herd Statistics.

Research, Data & Statistics
Compiled by Mac Donald
June 2007